

Worklist: 1248

<u>LAB_CASE</u>	<u>ITEM</u>	<u>TASK_ID</u>	<u>DESCRIPTION</u>	
M2016-1177	5	63088	6.1.1 Blood LCMS-QQQ Benzoc	
M2016-1250	1	63090	6.1.1 Blood LCMS-QQQ Benzoc	
M2016-1288	1	63091	6.1.1 Blood LCMS-QQQ Benzoc	
P2016-0550	1	63092	6.1.1 Blood LCMS-QQQ Benzoc	
P2016-0587	1	63093	6.1.1 Blood LCMS-QQQ Benzoc	
P2016-0641	1	63223	6.1.1 Blood LCMS-QQQ Benzoc	
P2016-0752	1	63099	6.1.1 Blood LCMS-QQQ Benzoc	
P2016-0791	1	63103	6.1.1 Blood LCMS-QQQ Benzoc	
P2016-0880	1	63101	6.1.1 Blood LCMS-QQQ Benzoc	

Reviewed 8/24/16



Worklist Report

Worklist Path:	C:\MassHunter\ISP Methods\worklists\CS Combined 081816.wkl
Date Modified:	08/18/2016 11:16:26 AM
Date Printed:	08/18/2016 11:16:33 AM

Worklist Run Parameters

Operator Name:	62340
Run Type:	Standard Start
Part of Method to Run:	Acquisition Only
Execution for Acquisition-DA:	Synchronous
Acquisition Method Path:	C:\MassHunter\ISP Methods\Acquisition
DA Method Path:	D:\MassHunter\methods
Data File Path:	C:\MassHunter\Data\2016\Combined\072216 CS
Pre-Worklist Script:	---
Post-Worklist Script:	SCP_InstrumentStandby(){MH_Acq_Scripts.exe}
Acquisition Clean Up Script:	SCP_InstrumentStandby(){MH_Acq_Scripts.exe}
Overlapped Injection:	No
Clear sample selection after run:	Yes
Wait Time for Ready(Min):	10
Threshold Disk Value(GB):	10
Comment:	---

Plate Barcode Information

Plate	Barcode
P1	
P2	

Worklist Table

Sample Position	Sample Name	Method	Data File	Sample Type	Level Name	Comment	Info.
P2-A1	Blank	isp blood cannabinoids Poky 2016-1.m	Blank1-r001.d	Blank		AM 6.1.2 Cannabinoids by LCQQQ	
P2-A1	Blank	isp blood cannabinoids Poky 2016-1.m	Blank2-r001.d	Blank		AM 6.1.2 Cannabinoids by LCQQQ	
P2-A2	Blood: 1_5 ng/mL	isp blood cannabinoids Poky 2016-1.m	B_CAL1-r001.d	Calibration	1	AM 6.1.2 Cannabinoids by LCQQQ	c-THC @5ng/mL, all others @1 ng/mL
P2-A3	Blood: 2_10 ng/mL	isp blood cannabinoids Poky 2016-1.m	B_CAL2_r001.d	Calibration	2	AM 6.1.2 Cannabinoids by LCQQQ	c-THC @10ng/mL, all others @2 ng/mL
P2-A4	Blood: 5_25 ng/mL	isp blood cannabinoids Poky 2016-1.m	B_CAL3_r001.d	Calibration	3	AM 6.1.2 Cannabinoids by LCQQQ	c-THC @25ng/mL, all others @5 ng/mL
P2-A5	Blood: 10_50 ng/mL	isp blood cannabinoids Poky 2016-1.m	B_CAL4_r001.d	Calibration	4	AM 6.1.2 Cannabinoids by LCQQQ	c-THC @50ng/mL, all others @10 ng/mL
P2-A6		isp blood cannabinoids Poky 2016-1.m	B_CAL5_r001.d	Calibration	5		c-THC @125ng/mL, all

Sample Position	Sample Name	Method	Data File	Sample Type	Level Name	Comment	Info. 
	Blood: 25_125 ngmL					AM 6.1.2 Cannabinoids by LCQQQ	others @25 ng/mL
P2-A7	Blood: 50_250 ngmL	isp blood cannabinoids Poky 2016-1.m	B_CAL6_r001.d	Calibration	6	AM 6.1.2 Cannabinoids by LCQQQ	c-THC @250ng/mL, all others @50 ng/mL
P2-A8	Blood: 100_500 ngmL	isp blood cannabinoids Poky 2016-1.m	B_CAL7_r001.d	Calibration	7	AM 6.1.2 Cannabinoids by LCQQQ	c-THC @500ng/mL, all others @100 ng/mL
P2-A1	Blank	isp blood cannabinoids Poky 2016-1.m	Carryover blank1_r001.d	Blank		AM 6.1.2 Cannabinoids by LCQQQ	
P2-A9	Blood Negative Control	isp blood cannabinoids Poky 2016-1.m	B-NC-r001.d	Sample		AM 6.1.2 Cannabinoids by LCQQQ	Negative Blood UTAK Lot B1013
P2-B1	Blood PC 1	isp blood cannabinoids Poky 2016-1.m	B-POS Ctrl 1-r001.d	Sample		AM 6.1.2 Cannabinoids by LCQQQ	Positive Control-UTAK B1013 + WS060716
P2-A1	Blank	isp blood cannabinoids Poky 2016-1.m	Carryover blank2_r001.d	Blank		AM 6.1.2 Cannabinoids by LCQQQ	
P2-A9	Blank M2016-0837-1	isp blood cannabinoids Poky 2016-1.m	M2016-0837-1_BLK_r001.d	Blank		AM 6.1.2 Cannabinoids by LCQQQ	
P2-B2	M2016-0837-1	isp blood cannabinoids Poky 2016-1.m	M2016-0837-1-r001.d	Sample		AM 6.1.2 Cannabinoids by LCQQQ	Blood
P2-A9	Blank M2016-0911-1	isp blood cannabinoids Poky 2016-1.m	M2016-0911-1_BLK_r001.d	Blank		AM 6.1.2 Cannabinoids by LCQQQ	
P2-B3	M2016-0911-1	isp blood cannabinoids Poky 2016-1.m	M2016-0911-1-r001.d	Sample		AM 6.1.2 Cannabinoids by LCQQQ	Blood
P2-A9	Blank M2016-1177-5	isp blood cannabinoids Poky 2016-1.m	M2016-1177-5_BLK_r001.d	Blank		AM 6.1.2 Cannabinoids by LCQQQ	
P2-B4	M2016-1177-5	isp blood cannabinoids Poky 2016-1.m	M2016-1177-5-r001.d	Sample		AM 6.1.2 Cannabinoids by LCQQQ	Blood
P2-A9	Blank P2016-0641-1	isp blood cannabinoids Poky 2016-1.m	P2016-0641-1_BLK_r001.d	Blank		AM 6.1.2 Cannabinoids by LCQQQ	
P2-B5	P2016-0641-1	isp blood cannabinoids Poky 2016-1.m	P2016-0641-1-r001.d	Sample		AM 6.1.2 Cannabinoids by LCQQQ	Blood
P2-A9	Blank P2016-0642-1	isp blood cannabinoids Poky 2016-1.m	P2016-0642-1_BLK_r001.d	Blank		AM 6.1.2 Cannabinoids by LCQQQ	
P2-B6	P2016-0642-1	isp blood cannabinoids Poky 2016-1.m	P2016-0642-1-r001.d	Sample		AM 6.1.2 Cannabinoids by LCQQQ	Blood
P2-A1	Blank	isp blood cannabinoids Poky 2016-1.m	cann-Carryover blank3_r001.d	Blank		AM 6.1.2 Cannabinoids by LCQQQ	
P2-C3	Blood PC 2	isp blood cannabinoids Poky 2016-1.m	B-POS Ctrl 2-r001.d	Sample		AM 6.1.2 Cannabinoids by LCQQQ	Positive Control-UTAK B1013 + WS060716
P2-A1	Blank	isp blood cannabinoids Poky 2016-1.m	Carryover blank4_r001.d	Blank		AM 6.1.2 Cannabinoids by LCQQQ	

Sample Position	Sample Name	Method	Data File	Sample Type	Level Name	Comment	Info. 9
P2-A9	Blank P2016-0668-1	isp blood cannabinoids Poky 2016-1.m	P2016-0668-1_BLK_r001.d	Blank		AM 6.1.2 Cannabinoids by LCQQQ	
P2-B7	P2016-0668-1	isp blood cannabinoids Poky 2016-1.m	P2016-0668-1-r001.d	Sample		AM 6.1.2 Cannabinoids by LCQQQ	Blood
P2-A9	Blank P2016-0694-1	isp blood cannabinoids Poky 2016-1.m	P2016-0694-1_BLK_r001.d	Blank		AM 6.1.2 Cannabinoids by LCQQQ	
P2-B8	P2016-0694-1	isp blood cannabinoids Poky 2016-1.m	P2016-0694-1-r001.d	Sample		AM 6.1.2 Cannabinoids by LCQQQ	Blood
P2-A9	Blank P2016-0752-1	isp blood cannabinoids Poky 2016-1.m	P2016-0752-1_BLK_r001.d	Blank		AM 6.1.2 Cannabinoids by LCQQQ	
P2-B9	P2016-0752-1	isp blood cannabinoids Poky 2016-1.m	P2016-0752-1-r001.d	Sample		AM 6.1.2 Cannabinoids by LCQQQ	Blood
P2-A9	Blank P2016-0761-1	isp blood cannabinoids Poky 2016-1.m	P2016-0761-1_BLK_r001.d	Blank		AM 6.1.2 Cannabinoids by LCQQQ	
P2-C1	P2016-0761-1	isp blood cannabinoids Poky 2016-1.m	P2016-0761-1-r001.d	Sample		AM 6.1.2 Cannabinoids by LCQQQ	Blood
P2-A9	Blank P2016-1006-1	isp blood cannabinoids Poky 2016-1.m	P2016-1006-1_BLK_r001.d	Blank		AM 6.1.2 Cannabinoids by LCQQQ	
P2-C2	P2016-1006-1	isp blood cannabinoids Poky 2016-1.m	P2016-1006-1-r001.d	Sample		AM 6.1.2 Cannabinoids by LCQQQ	Blood
P2-A1	Blank	isp blood cannabinoids Poky 2016-1.m	Blank3-r001.d	Blank		AM 6.1.2 Cannabinoids by LCQQQ	Blood
P1-F9	Blank	Benzos_Z_Drugs_ACN_FA_ISP_2016.m	BZ-Blank1-r001.d	Blank		AM 6.1.1 Benzo and Z by LCQQQ	Blood
P1-F9	Blank	Benzos_Z_Drugs_ACN_FA_ISP_2016.m	BZ-Blank2-r001.d	Blank		AM 6.1.1 Benzo and Z by LCQQQ	Blood
P1-F7	10 ngmL	Benzos_Z_Drugs_ACN_FA_ISP_2016.m	BZ-10 ngmL-r001.d	Calibration	2	AM 6.1.1 Benzo and Z by LCQQQ	
P1-F6	25 ngmL	Benzos_Z_Drugs_ACN_FA_ISP_2016.m	BZ-25 ngmL_r001.d	Calibration	3	AM 6.1.1 Benzo and Z by LCQQQ	
P1-F5	50 ngmL	Benzos_Z_Drugs_ACN_FA_ISP_2016.m	BZ-50 ngmL_r001.d	Calibration	4	AM 6.1.1 Benzo and Z by LCQQQ	
P1-F4	100 ngmL	Benzos_Z_Drugs_ACN_FA_ISP_2016.m	BZ-100 ngmL_r001.d	Calibration	5	AM 6.1.1 Benzo and Z by LCQQQ	
P1-F3	500 ngmL	Benzos_Z_Drugs_ACN_FA_ISP_2016.m	BZ-500 ngmL_r001.d	Calibration	6	AM 6.1.1 Benzo and Z by LCQQQ	
P1-F2	1000 ngmL	Benzos_Z_Drugs_ACN_FA_ISP_2016.m	BZ-1000 ngmL_r001.d	Calibration	7	AM 6.1.1 Benzo and Z by LCQQQ	
P1-F1	3000 ngmL	Benzos_Z_Drugs_ACN_FA_ISP_2016.m	BZ-3000 ngmL_r001.d	Calibration	8	AM 6.1.1 Benzo and Z by LCQQQ	
P1-F9	Blank	Benzos_Z_Drugs_ACN_FA_ISP_2016.m	BZ-Carryover blank1_r001.d	Blank			

Sample Position	Sample Name	Method	Data File	Sample Type	Level Name	Comment	Info. 9
						AM 6.1.1 Benzo and Z by LCQQQ	
P1-E9	Negative Blood Control	Benzos_Z_Drugs_ACN_FA_ISP_2016.m	BZ-NC-B_r001.d	Sample		AM 6.1.1 Benzo and Z by LCQQQ	UTAK Negative Whole Blood LOT B1013
P1-E8	Positive Blood Control	Benzos_Z_Drugs_ACN_FA_ISP_2016.m	BZ-PC-B-r001.d	Sample		AM 6.1.1 Benzo and Z by LCQQQ	Benzodiazepines Mix Cerilliant lot FE012413-02 in UTAK LOT B1013
P1-E9	Blank - M2016-1177-5	Benzos_Z_Drugs_ACN_FA_ISP_2016.m	BZ-Carryover blank-M2016-1177-5_r001.d	Blank		AM 6.1.1 Benzo and Z by LCQQQ	
P1-E7	M2016-1177-5	Benzos_Z_Drugs_ACN_FA_ISP_2016.m	BZ-M2016-1177-5-r001.d	Sample		AM 6.1.1 Benzo and Z by LCQQQ	Blood
P1-E9	Blank - M2016-1250-1	Benzos_Z_Drugs_ACN_FA_ISP_2016.m	BZ-Carryover blank-M2016-1250-1_r001.d	Blank		AM 6.1.1 Benzo and Z by LCQQQ	
P1-E6	M2016-1250-1	Benzos_Z_Drugs_ACN_FA_ISP_2016.m	BZ-M2016-1250-1-r001.d	Sample		AM 6.1.1 Benzo and Z by LCQQQ	Blood
P1-E9	Blank - M2016-1288-1	Benzos_Z_Drugs_ACN_FA_ISP_2016.m	BZ-Carryover blank-M2016-1288-1_r001.d	Blank		AM 6.1.1 Benzo and Z by LCQQQ	
P1-E5	M2016-1288-1	Benzos_Z_Drugs_ACN_FA_ISP_2016.m	BZ-M2016-1288-1-r001.d	Sample		AM 6.1.1 Benzo and Z by LCQQQ	Blood
P1-E9	Blank - P2016-0550-1	Benzos_Z_Drugs_ACN_FA_ISP_2016.m	BZ-Carryover blank-P2016-0550-1_r001.d	Blank		AM 6.1.1 Benzo and Z by LCQQQ	
P1-E4	P2016-0550-1	Benzos_Z_Drugs_ACN_FA_ISP_2016.m	BZ-P2016-0550-1-r001.d	Sample		AM 6.1.1 Benzo and Z by LCQQQ	Blood
P1-E9	Blank - P2016-0571-1	Benzos_Z_Drugs_ACN_FA_ISP_2016.m	BZ-Carryover blank-P2016-0571-1_r001.d	Blank		AM 6.1.1 Benzo and Z by LCQQQ	
P1-E3	P2016-0571-1	Benzos_Z_Drugs_ACN_FA_ISP_2016.m	BZ-P2016-0571-1-r001.d	Sample		AM 6.1.1 Benzo and Z by LCQQQ	Blood
P1-E9	Blank - P2016-0587-1	Benzos_Z_Drugs_ACN_FA_ISP_2016.m	BZ-Carryover blank-P2016-0587-1_r001.d	Blank		AM 6.1.1 Benzo and Z by LCQQQ	
P1-E2	P2016-0587-1	Benzos_Z_Drugs_ACN_FA_ISP_2016.m	BZ-P2016-0587-1-r001.d	Sample		AM 6.1.1 Benzo and Z by LCQQQ	Blood
P1-E9	Blank - P2016-0641-1	Benzos_Z_Drugs_ACN_FA_ISP_2016.m	BZ-Carryover blank-P2016-0641-1_r001.d	Blank		AM 6.1.1 Benzo and Z by LCQQQ	
P1-E1	P2016-0641-1	Benzos_Z_Drugs_ACN_FA_ISP_2016.m	BZ-P2016-0641-1-r001.d	Sample		AM 6.1.1 Benzo and Z by LCQQQ	Blood
P1-E9	Blank - P2016-0752-1	Benzos_Z_Drugs_ACN_FA_ISP_2016.m	BZ-Carryover blank-P2016-0752-1_r001.d	Blank		AM 6.1.1 Benzo and Z by LCQQQ	
P1-D9	P2016-0752-1	Benzos_Z_Drugs_ACN_FA_ISP_2016.m	BZ-P2016-0752-1-r001.d	Sample		AM 6.1.1 Benzo and Z by LCQQQ	Blood
P1-E9	Blank - P2016-0791-1	Benzos_Z_Drugs_ACN_FA_ISP_2016.m	BZ-Carryover blank-P2016-0791-1_r001.d	Blank		AM 6.1.1 Benzo and Z by LCQQQ	

Sample Position	Sample Name	Method	Data File	Sample Type	Level Name	Comment	Info. ۹
P1-D8	P2016-0791-1	Benzos_Z_Drugs_ACN_FA_ISP_2016.m	BZ-P2016-0791-1-r001.d	Sample		AM 6.1.1 Benzo and Z by LCQQQ	Blood
P1-E9	Blank - P2016-0880-1	Benzos_Z_Drugs_ACN_FA_ISP_2016.m	BZ-Carryover blank-P2016-0880-1_r001.d	Blank		AM 6.1.1 Benzo and Z by LCQQQ	
P1-D7	P2016-0880-1	Benzos_Z_Drugs_ACN_FA_ISP_2016.m	BZ-P2016-0880-1-r001.d	Sample		AM 6.1.1 Benzo and Z by LCQQQ	Blood
P1-F9	Blank	Benzos_Z_Drugs_ACN_FA_ISP_2016.m	BZ-Carryover blank3_r001.d	Blank		AM 6.1.1 Benzo and Z by LCQQQ	

ISP Forensics Calibration Curve Report

CS

Batch Data Path
Last Calib Update

I:\Pocatello\Abby\2016\Combined\QuantResults\818bzpoc.batch.bin

8/22/2016 2:28 PM

Analyst Name

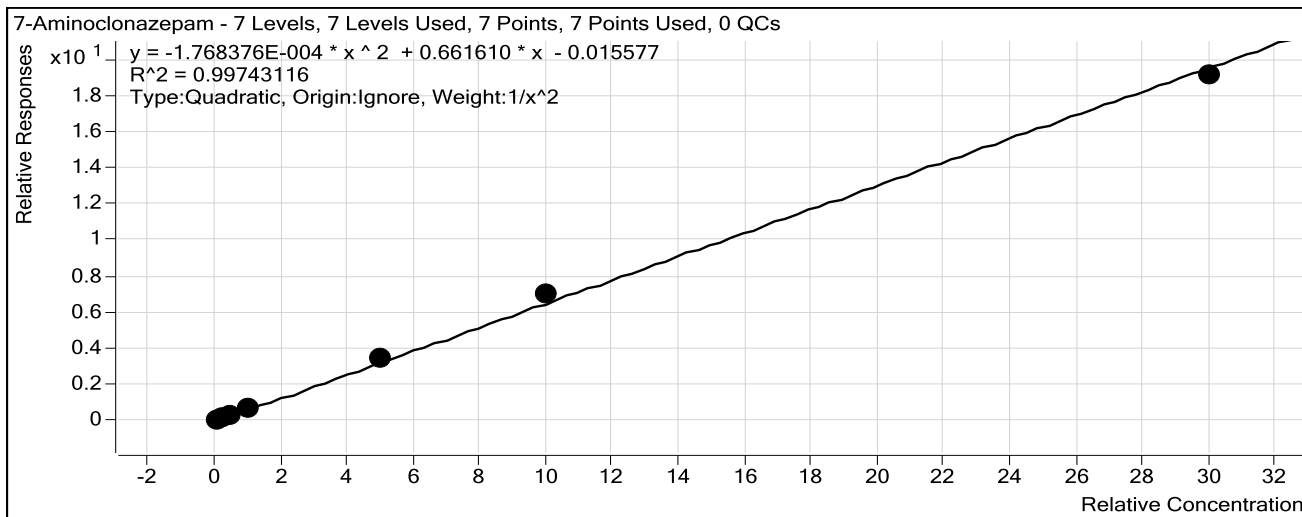
ISP TOX

Target Compound

7-Aminoclonazepam

Internal Standard

7-Aminoflunitrazepam-D7 ISTD

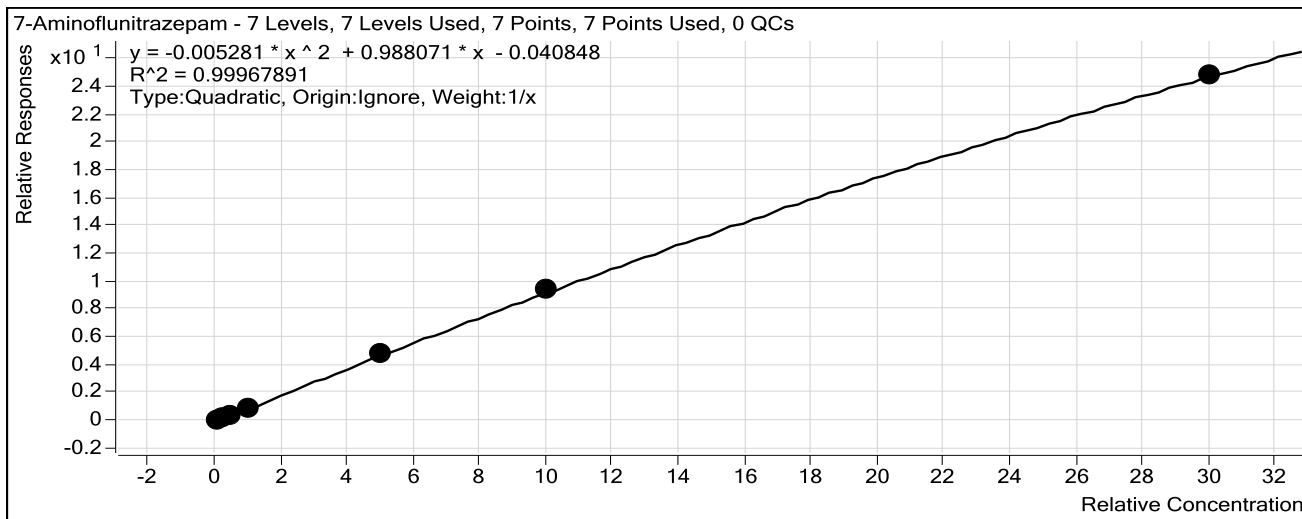


Sample	Level	Enabled	Exp Conc	Final Conc	Accuracy
10 ng/mL	2	<input checked="" type="checkbox"/>	10	10.2	102.0
25 ng/mL	3	<input checked="" type="checkbox"/>	25	24.5	97.9
50 ng/mL	4	<input checked="" type="checkbox"/>	50	47.5	95.1
100 ng/mL	5	<input checked="" type="checkbox"/>	100	96.7	96.7
500 ng/mL	6	<input checked="" type="checkbox"/>	500	522.1	104.4
1000 ng/mL	7	<input checked="" type="checkbox"/>	1000	1067.3	106.7
3000 ng/mL	8	<input checked="" type="checkbox"/>	3000	2915.8	97.2

ISP Forensics Calibration Curve Report

Batch Data Path I:\Pocatello\Abby\2016\Combined\QuantResults\818bzpoc.batch.bin
Last Calib Update 8/22/2016 2:28 PM **Analyst Name** ISP TOX

Target Compound 7-Aminoflunitrazepam
Internal Standard 7-Aminoflunitrazepam-D7 ISTD

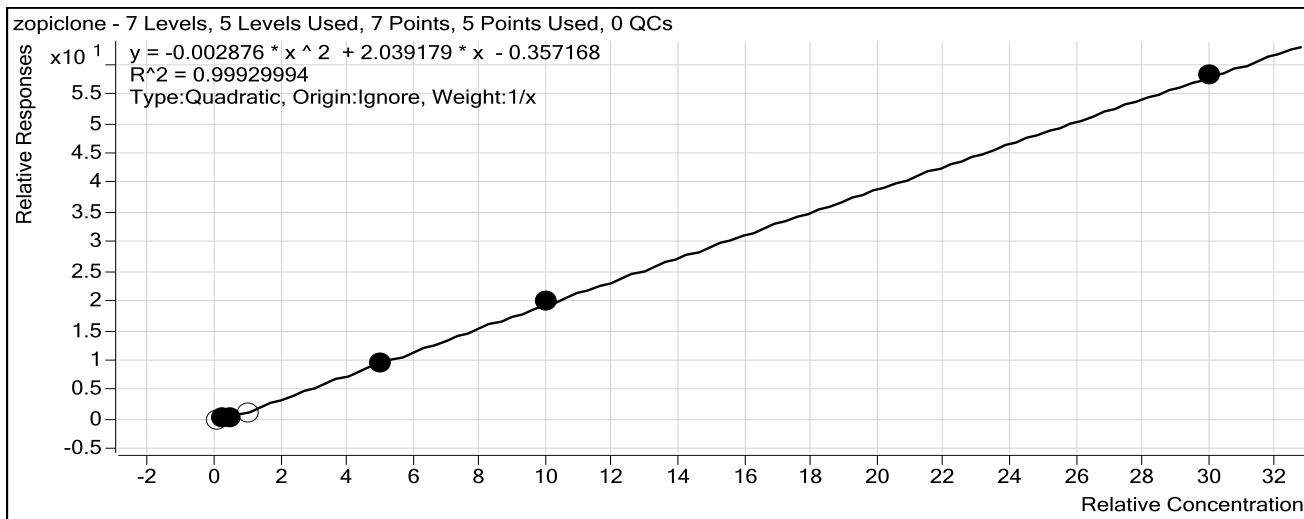


Sample	Level	Enabled	Exp Conc	Final Conc	Accuracy
10 ng/mL	2	<input checked="" type="checkbox"/>	10	11.4	113.5
25 ng/mL	3	<input checked="" type="checkbox"/>	25	24.7	99.0
50 ng/mL	4	<input checked="" type="checkbox"/>	50	46.6	93.2
100 ng/mL	5	<input checked="" type="checkbox"/>	100	93.1	93.1
500 ng/mL	6	<input checked="" type="checkbox"/>	500	499.1	99.8
1000 ng/mL	7	<input checked="" type="checkbox"/>	1000	1016.1	101.6
3000 ng/mL	8	<input checked="" type="checkbox"/>	3000	2993.6	99.8

ISP Forensics Calibration Curve Report

Batch Data Path I:\Pocatello\Abby\2016\Combined\QuantResults\818bzpoc.batch.bin
Last Calib Update 8/22/2016 2:28 PM **Analyst Name** ISP TOX

Target Compound zopiclone
Internal Standard Nordiazepam-D5 ISTD

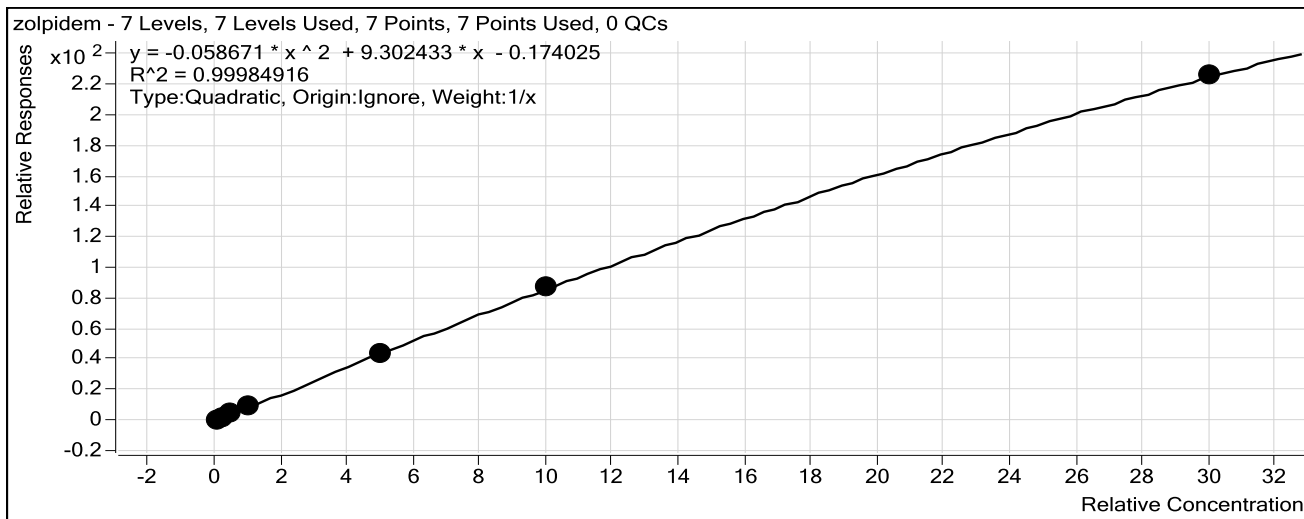


Sample	Level	Enabled	Exp Conc	Final Conc	Accuracy
10 ng/mL	2	<input type="checkbox"/>	10	21.7	217.5
25 ng/mL	3	<input checked="" type="checkbox"/>	25	29.2	116.9
50 ng/mL	4	<input checked="" type="checkbox"/>	50	41.8	83.5
100 ng/mL	5	<input type="checkbox"/>	100	71.3	71.3
500 ng/mL	6	<input checked="" type="checkbox"/>	500	488.4	97.7
1000 ng/mL	7	<input checked="" type="checkbox"/>	1000	1020.7	102.1
3000 ng/mL	8	<input checked="" type="checkbox"/>	3000	2994.9	99.8

ISP Forensics Calibration Curve Report

Batch Data Path I:\Pocatello\Abby\2016\Combined\QuantResults\818bzpoc.batch.bin
Last Calib Update 8/22/2016 2:28 PM **Analyst Name** ISP TOX

Target Compound zolpidem
Internal Standard Nordiazepam-D5 ISTD

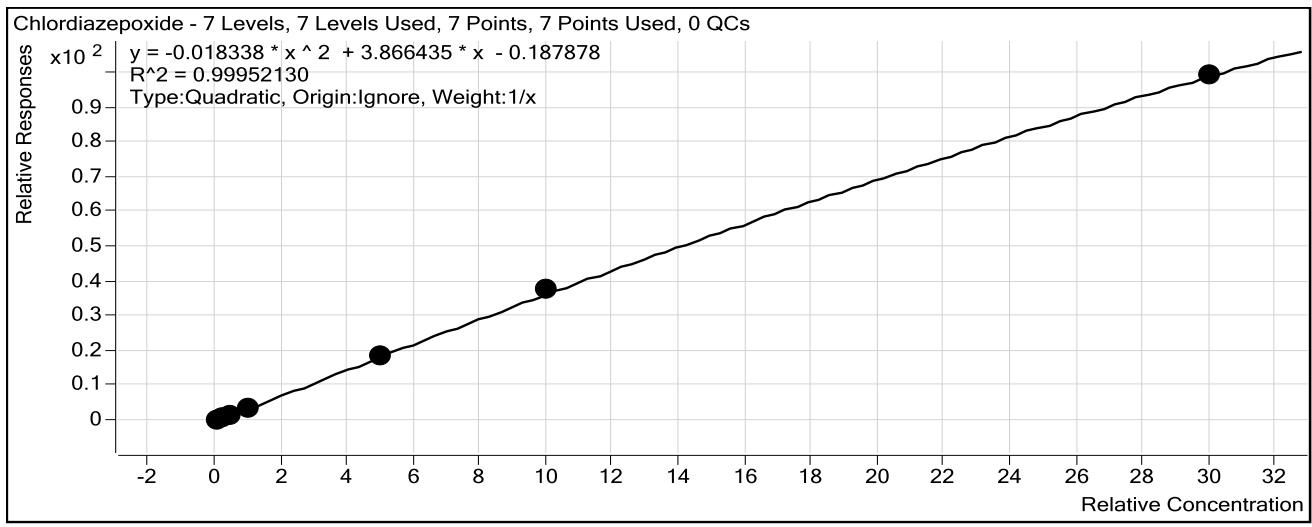


Sample	Level	Enabled	Exp Conc	Final Conc	Accuracy
10 ng/mL	2	<input checked="" type="checkbox"/>	10	10.1	101.3
25 ng/mL	3	<input checked="" type="checkbox"/>	25	24.7	98.8
50 ng/mL	4	<input checked="" type="checkbox"/>	50	49.0	98.0
100 ng/mL	5	<input checked="" type="checkbox"/>	100	103.1	103.1
500 ng/mL	6	<input checked="" type="checkbox"/>	500	488.2	97.6
1000 ng/mL	7	<input checked="" type="checkbox"/>	1000	1012.7	101.3
3000 ng/mL	8	<input checked="" type="checkbox"/>	3000	2996.9	99.9

ISP Forensics Calibration Curve Report

Batch Data Path I:\Pocatello\Abby\2016\Combined\QuantResults\818bzpoc.batch.bin
Last Calib Update 8/22/2016 2:28 PM **Analyst Name** ISP TOX

Target Compound *Chlordiazepoxide*
Internal Standard *Nordiazepam-D5 ISTD*



Sample	Level	Enabled	Exp Conc	Final Conc	Accuracy
10 ng/mL	2	<input checked="" type="checkbox"/>	10	11.7	116.6
25 ng/mL	3	<input checked="" type="checkbox"/>	25	23.9	95.8
50 ng/mL	4	<input checked="" type="checkbox"/>	50	46.0	92.0
100 ng/mL	5	<input checked="" type="checkbox"/>	100	95.3	95.3
500 ng/mL	6	<input checked="" type="checkbox"/>	500	489.2	97.8
1000 ng/mL	7	<input checked="" type="checkbox"/>	1000	1027.2	102.7
3000 ng/mL	8	<input checked="" type="checkbox"/>	3000	2991.3	99.7

ISP Forensics Calibration Curve Report

Batch Data Path
Last Calib Update

I:\Pocatello\Abby\2016\Combined\QuantResults\818bzpoc.batch.bin

8/22/2016 2:28 PM

Analyst Name

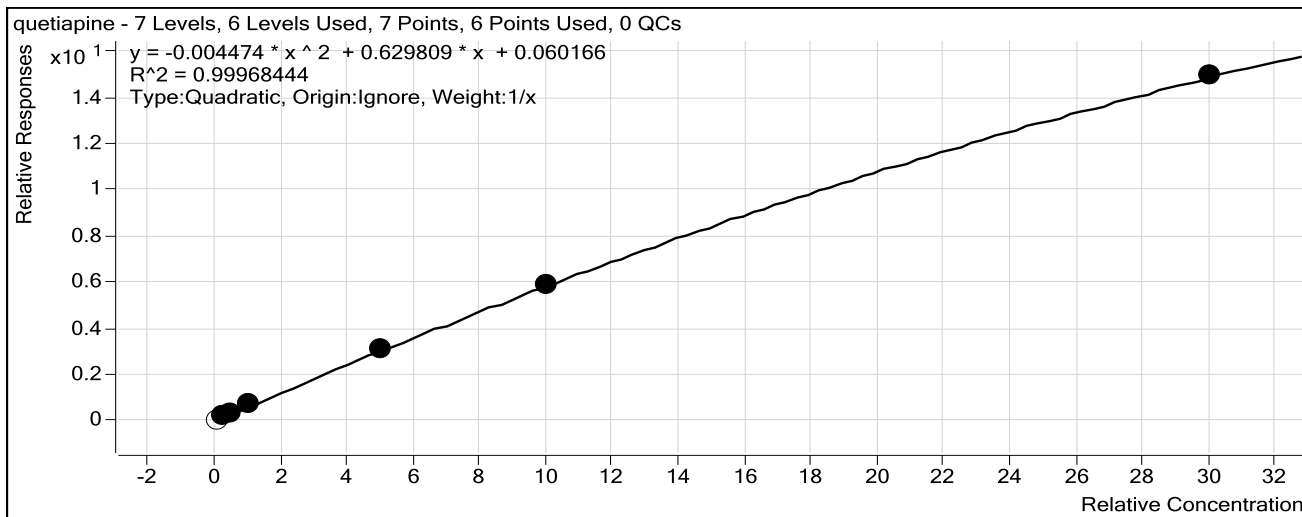
ISP TOX

Target Compound

quetiapine

Internal Standard

Temazepam-D5 ISTD

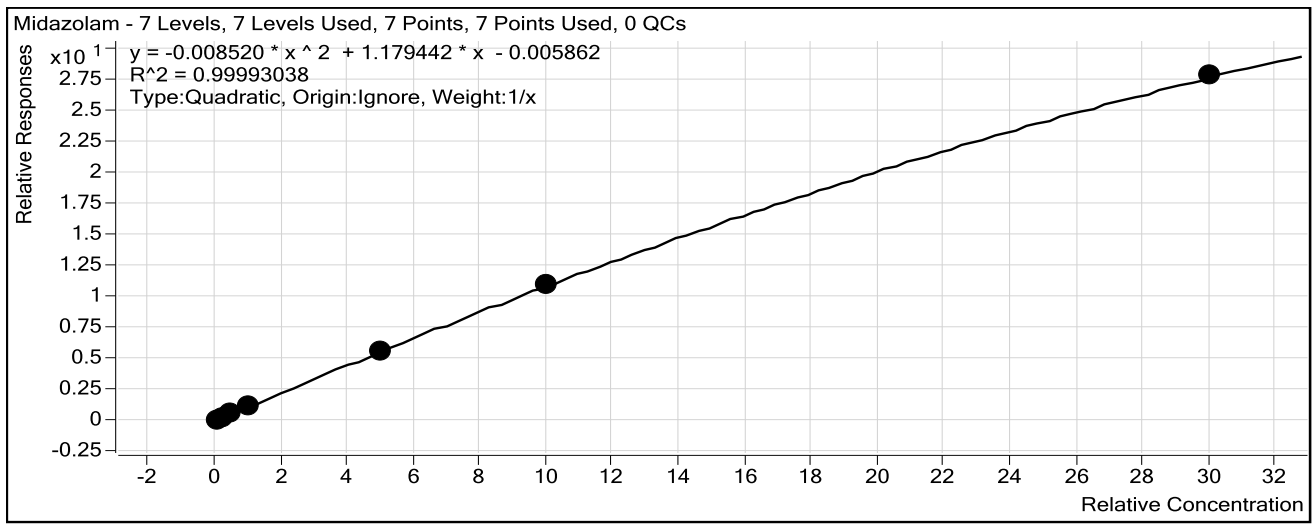


Sample	Level	Enabled	Exp Conc	Final Conc	Accuracy
10 ng/mL	2	<input type="checkbox"/>	10	3.2	31.5
25 ng/mL	3	<input checked="" type="checkbox"/>	25	23.4	93.6
50 ng/mL	4	<input checked="" type="checkbox"/>	50	49.3	98.6
100 ng/mL	5	<input checked="" type="checkbox"/>	100	108.8	108.8
500 ng/mL	6	<input checked="" type="checkbox"/>	500	497.8	99.6
1000 ng/mL	7	<input checked="" type="checkbox"/>	1000	992.2	99.2
3000 ng/mL	8	<input checked="" type="checkbox"/>	3000	3004.0	100.1

ISP Forensics Calibration Curve Report

Batch Data Path I:\Pocatello\Abby\2016\Combined\QuantResults\818bzpoc.batch.bin
Last Calib Update 8/22/2016 2:28 PM **Analyst Name** ISP TOX

Target Compound Midazolam
Internal Standard Clonazepam-D4 ISTD



Sample	Level	Enabled	Exp Conc	Final Conc	Accuracy
10 ng/mL	2	<input checked="" type="checkbox"/>	10	9.6	95.9
25 ng/mL	3	<input checked="" type="checkbox"/>	25	25.4	101.5
50 ng/mL	4	<input checked="" type="checkbox"/>	50	49.5	99.0
100 ng/mL	5	<input checked="" type="checkbox"/>	100	104.2	104.2
500 ng/mL	6	<input checked="" type="checkbox"/>	500	498.8	99.8
1000 ng/mL	7	<input checked="" type="checkbox"/>	1000	995.5	99.5
3000 ng/mL	8	<input checked="" type="checkbox"/>	3000	3002.4	100.1

ISP Forensics Calibration Curve Report

CS

Batch Data Path
Last Calib Update

I:\Pocatello\Abby\2016\Combined\QuantResults\818bzpoc.batch.bin

8/22/2016 2:28 PM

Analyst Name

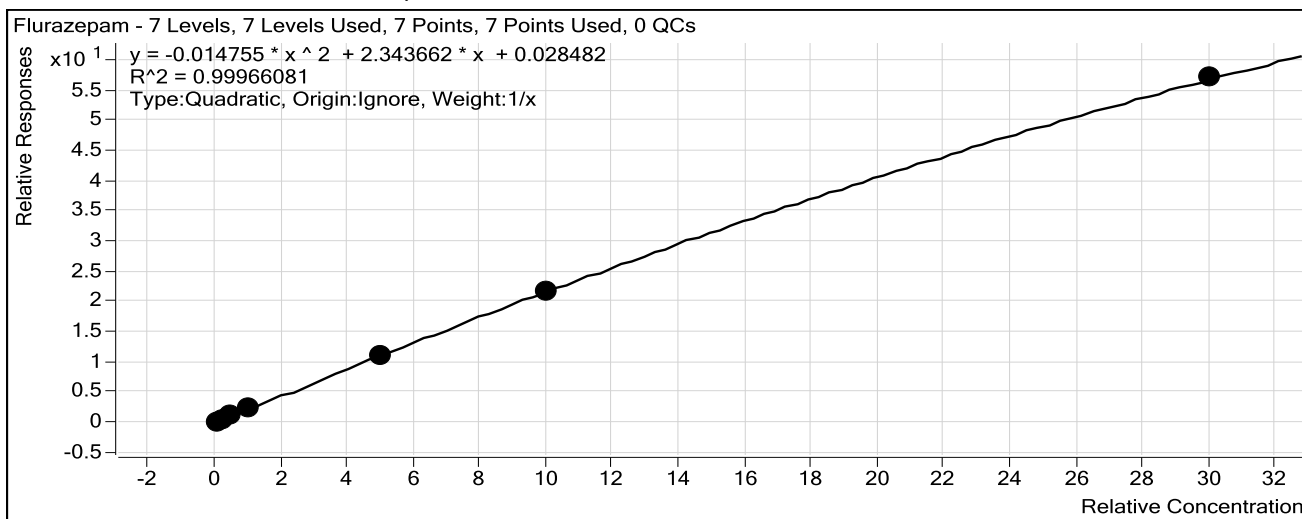
ISP TOX

Target Compound

Flurazepam

Internal Standard

Diazepam-D5 ISTD



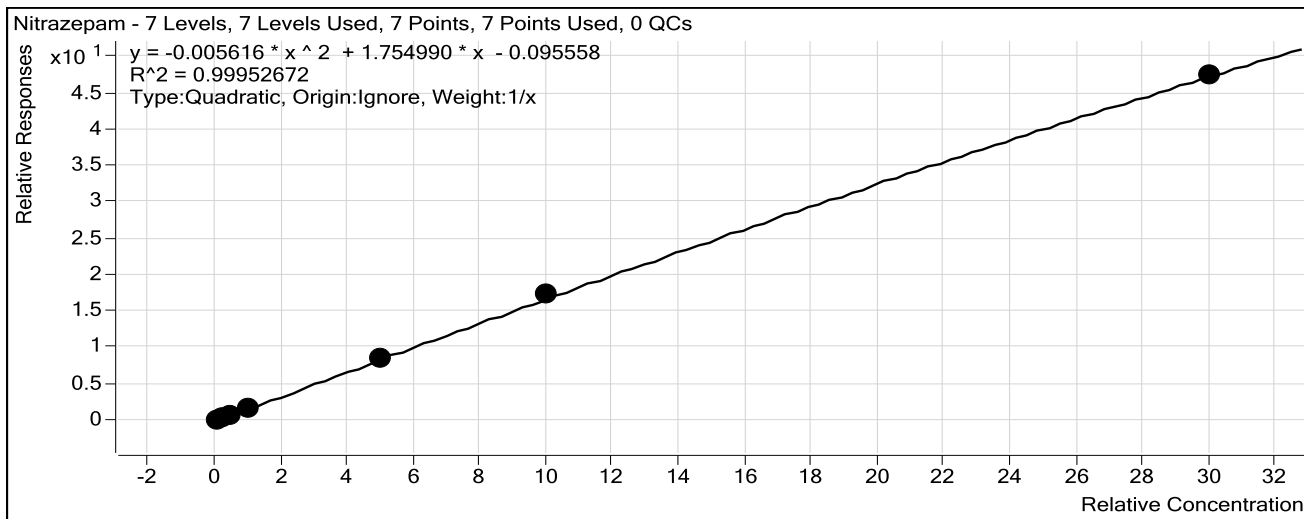
Sample	Level	Enabled	Exp Conc	Final Conc	Accuracy
10 ng/mL	2	<input checked="" type="checkbox"/>	10	8.6	85.7
25 ng/mL	3	<input checked="" type="checkbox"/>	25	25.9	103.5
50 ng/mL	4	<input checked="" type="checkbox"/>	50	52.4	104.8
100 ng/mL	5	<input checked="" type="checkbox"/>	100	108.0	108.0
500 ng/mL	6	<input checked="" type="checkbox"/>	500	492.7	98.5
1000 ng/mL	7	<input checked="" type="checkbox"/>	1000	993.6	99.4
3000 ng/mL	8	<input checked="" type="checkbox"/>	3000	3004.3	100.1

ISP Forensics Calibration Curve Report

Batch Data Path
Last Calib Update

I:\Pocatello\Abby\2016\Combined\QuantResults\818bzpoc.batch.bin
8/22/2016 2:28 PM **Analyst Name** ISP TOX

Target Compound Nitrazepam
Internal Standard Clonazepam-D4 ISTD

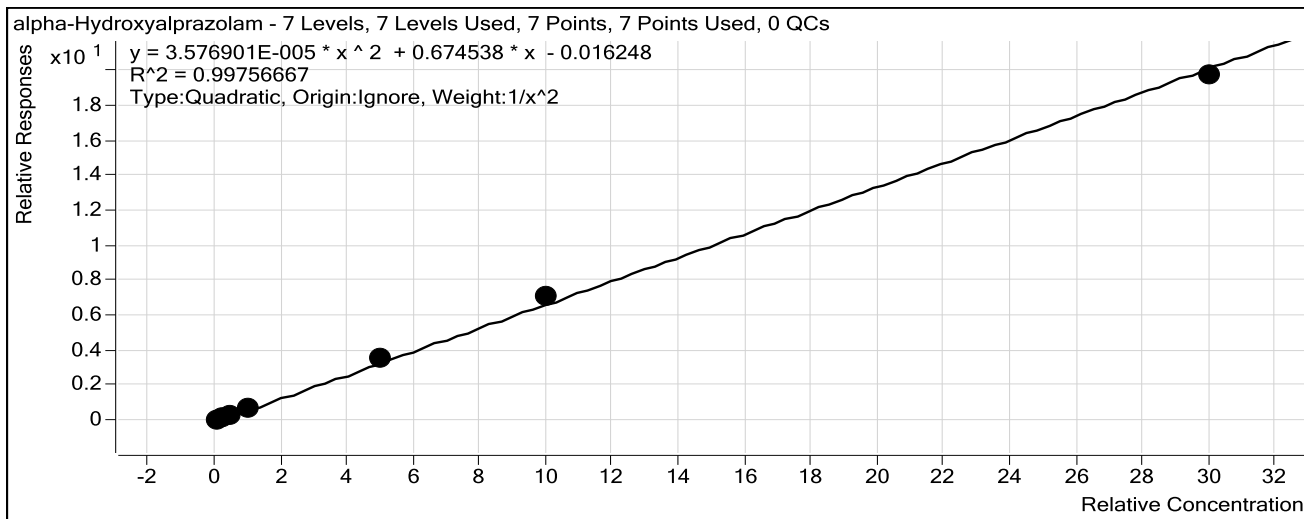


Sample	Level	Enabled	Exp Conc	Final Conc	Accuracy
10 ng/mL	2	<input checked="" type="checkbox"/>	10	11.9	119.4
25 ng/mL	3	<input checked="" type="checkbox"/>	25	24.2	96.9
50 ng/mL	4	<input checked="" type="checkbox"/>	50	44.0	88.0
100 ng/mL	5	<input checked="" type="checkbox"/>	100	94.6	94.6
500 ng/mL	6	<input checked="" type="checkbox"/>	500	496.6	99.3
1000 ng/mL	7	<input checked="" type="checkbox"/>	1000	1020.3	102.0
3000 ng/mL	8	<input checked="" type="checkbox"/>	3000	2993.2	99.8

ISP Forensics Calibration Curve Report

Batch Data Path I:\Pocatello\Abby\2016\Combined\QuantResults\818bzpoc.batch.bin
Last Calib Update 8/22/2016 2:28 PM **Analyst Name** ISP TOX

Target Compound *alpha-Hydroxyalprazolam*
Internal Standard *alphahydroxyalprazolam-D5 ISTD*

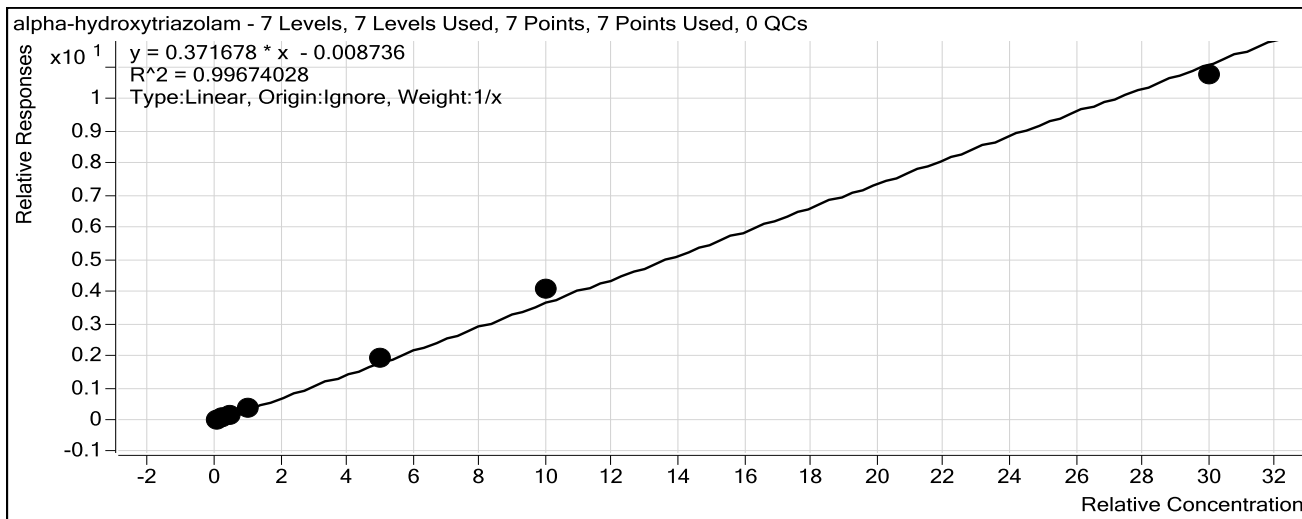


Sample	Level	Enabled	Exp Conc	Final Conc	Accuracy
10 ng/mL	2	<input checked="" type="checkbox"/>	10	10.2	101.8
25 ng/mL	3	<input checked="" type="checkbox"/>	25	24.5	98.0
50 ng/mL	4	<input checked="" type="checkbox"/>	50	48.1	96.2
100 ng/mL	5	<input checked="" type="checkbox"/>	100	95.5	95.5
500 ng/mL	6	<input checked="" type="checkbox"/>	500	526.1	105.2
1000 ng/mL	7	<input checked="" type="checkbox"/>	1000	1058.2	105.8
3000 ng/mL	8	<input checked="" type="checkbox"/>	3000	2922.6	97.4

ISP Forensics Calibration Curve Report

Batch Data Path I:\Pocatello\Abby\2016\Combined\QuantResults\818bzpoc.batch.bin
Last Calib Update 8/22/2016 2:28 PM **Analyst Name** ISP TOX

Target Compound *alpha-hydroxytriazolam*
Internal Standard *Nordiazepam-D5 ISTD*



Sample	Level	Enabled	Exp Conc	Final Conc	Accuracy
10 ng/mL	2	<input checked="" type="checkbox"/>	10	10.3	103.4
25 ng/mL	3	<input checked="" type="checkbox"/>	25	23.5	93.9
50 ng/mL	4	<input checked="" type="checkbox"/>	50	46.4	92.8
100 ng/mL	5	<input checked="" type="checkbox"/>	100	99.2	99.2
500 ng/mL	6	<input checked="" type="checkbox"/>	500	527.1	105.4
1000 ng/mL	7	<input checked="" type="checkbox"/>	1000	1091.2	109.1
3000 ng/mL	8	<input checked="" type="checkbox"/>	3000	2887.3	96.2

ISP Forensics Calibration Curve Report

Batch Data Path
Last Calib Update

I:\Pocatello\Abby\2016\Combined\QuantResults\818bzpoc.batch.bin

8/22/2016 2:28 PM

Analyst Name

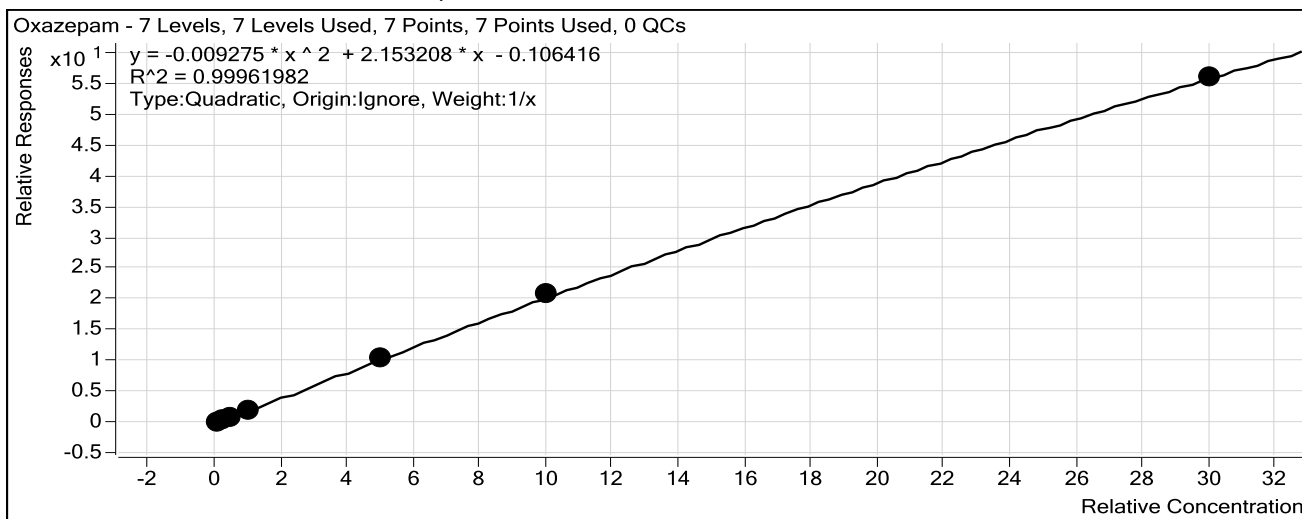
ISP TOX

Target Compound

Oxazepam

Internal Standard

Nordiazepam-D5 ISTD

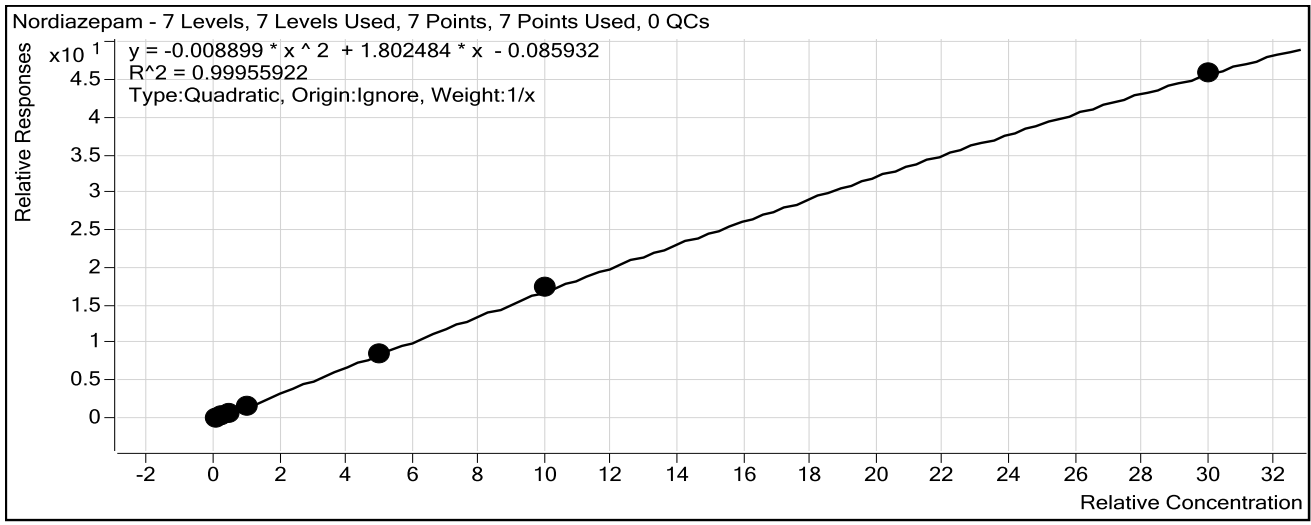


Sample	Level	Enabled	Exp Conc	Final Conc	Accuracy
10 ng/mL	2	<input checked="" type="checkbox"/>	10	11.9	119.2
25 ng/mL	3	<input checked="" type="checkbox"/>	25	23.1	92.3
50 ng/mL	4	<input checked="" type="checkbox"/>	50	46.1	92.2
100 ng/mL	5	<input checked="" type="checkbox"/>	100	95.5	95.5
500 ng/mL	6	<input checked="" type="checkbox"/>	500	495.6	99.1
1000 ng/mL	7	<input checked="" type="checkbox"/>	1000	1019.1	101.9
3000 ng/mL	8	<input checked="" type="checkbox"/>	3000	2993.4	99.8

ISP Forensics Calibration Curve Report

Batch Data Path I:\Pocatello\Abby\2016\Combined\QuantResults\818bzpoc.batch.bin
Last Calib Update 8/22/2016 2:28 PM **Analyst Name** ISP TOX

Target Compound Nordiazepam
Internal Standard Nordiazepam-D5 ISTD



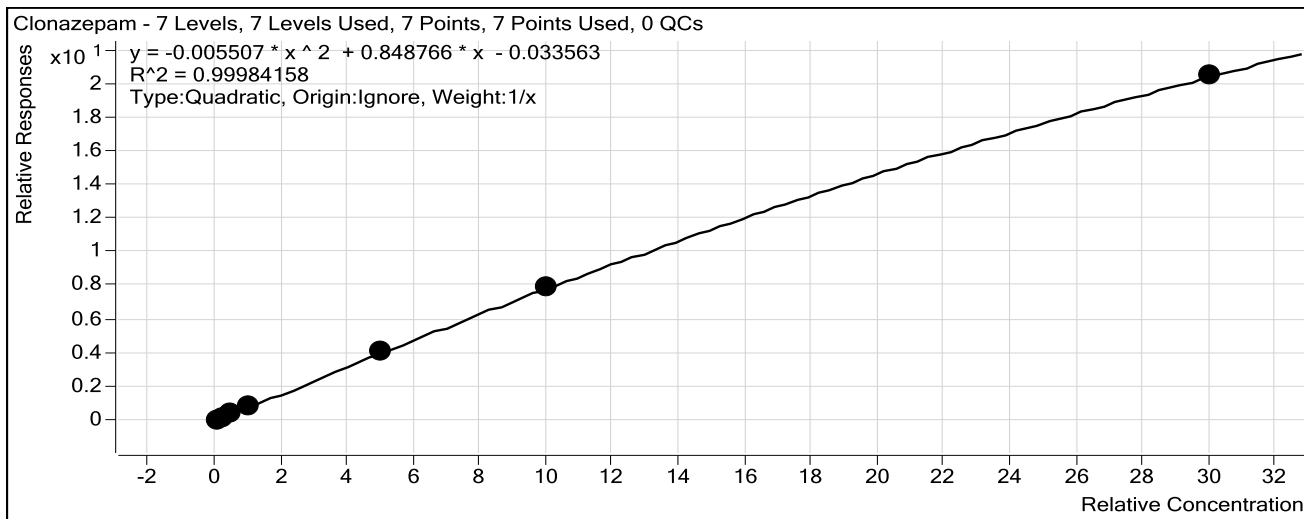
Sample	Level	Enabled	Exp Conc	Final Conc	Accuracy
10 ng/mL	2	<input checked="" type="checkbox"/>	10	11.6	116.0
25 ng/mL	3	<input checked="" type="checkbox"/>	25	24.3	97.1
50 ng/mL	4	<input checked="" type="checkbox"/>	50	45.2	90.4
100 ng/mL	5	<input checked="" type="checkbox"/>	100	96.1	96.1
500 ng/mL	6	<input checked="" type="checkbox"/>	500	491.0	98.2
1000 ng/mL	7	<input checked="" type="checkbox"/>	1000	1024.6	102.5
3000 ng/mL	8	<input checked="" type="checkbox"/>	3000	2991.9	99.7

ISP Forensics Calibration Curve Report

6

Batch Data Path I:\Pocatello\Abby\2016\Combined\QuantResults\818bzpoc.batch.bin
Last Calib Update 8/22/2016 2:28 PM **Analyst Name** ISP TOX

Target Compound Clonazepam
Internal Standard Clonazepam-D4 ISTD



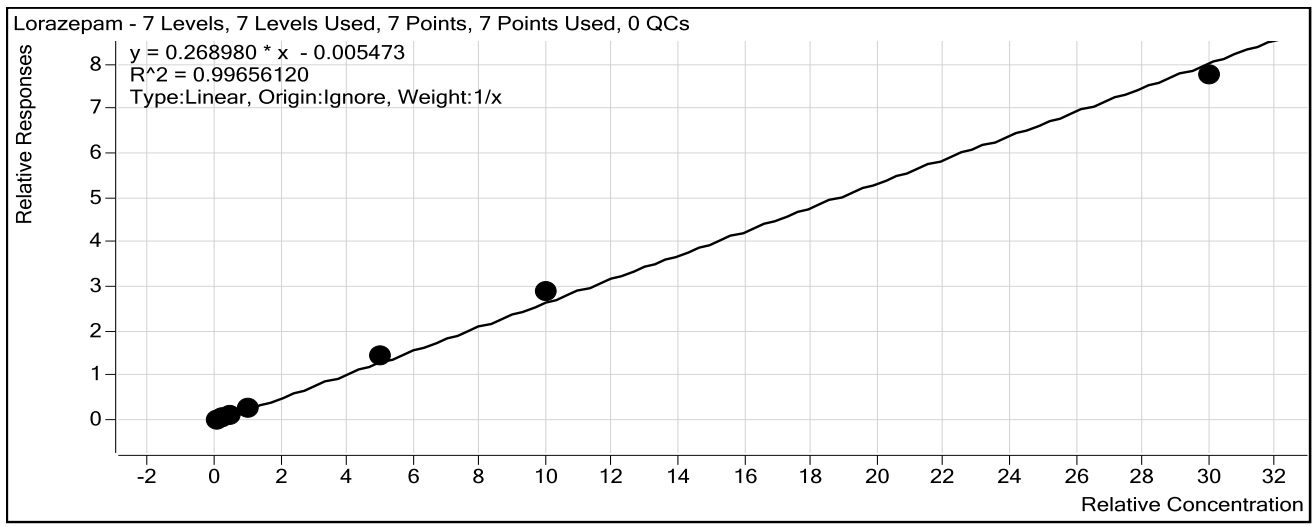
Sample	Level	Enabled	Exp Conc	Final Conc	Accuracy
10 ng/mL	2	<input checked="" type="checkbox"/>	10	11.1	111.1
25 ng/mL	3	<input checked="" type="checkbox"/>	25	24.5	97.9
50 ng/mL	4	<input checked="" type="checkbox"/>	50	46.4	92.9
100 ng/mL	5	<input checked="" type="checkbox"/>	100	97.1	97.1
500 ng/mL	6	<input checked="" type="checkbox"/>	500	502.6	100.5
1000 ng/mL	7	<input checked="" type="checkbox"/>	1000	1006.2	100.6
3000 ng/mL	8	<input checked="" type="checkbox"/>	3000	2996.6	99.9

ISP Forensics Calibration Curve Report

CS

Batch Data Path I:\Pocatello\Abby\2016\Combined\QuantResults\818bzpoc.batch.bin
Last Calib Update 8/22/2016 2:28 PM **Analyst Name** ISP TOX

Target Compound Lorazepam
Internal Standard Nordiazepam-D5 ISTD



Sample	Level	Enabled	Exp Conc	Final Conc	Accuracy
10 ng/mL	2	<input checked="" type="checkbox"/>	10	10.5	104.8
25 ng/mL	3	<input checked="" type="checkbox"/>	25	22.7	91.0
50 ng/mL	4	<input checked="" type="checkbox"/>	50	46.4	92.7
100 ng/mL	5	<input checked="" type="checkbox"/>	100	99.5	99.5
500 ng/mL	6	<input checked="" type="checkbox"/>	500	536.3	107.3
1000 ng/mL	7	<input checked="" type="checkbox"/>	1000	1086.6	108.7
3000 ng/mL	8	<input checked="" type="checkbox"/>	3000	2883.1	96.1

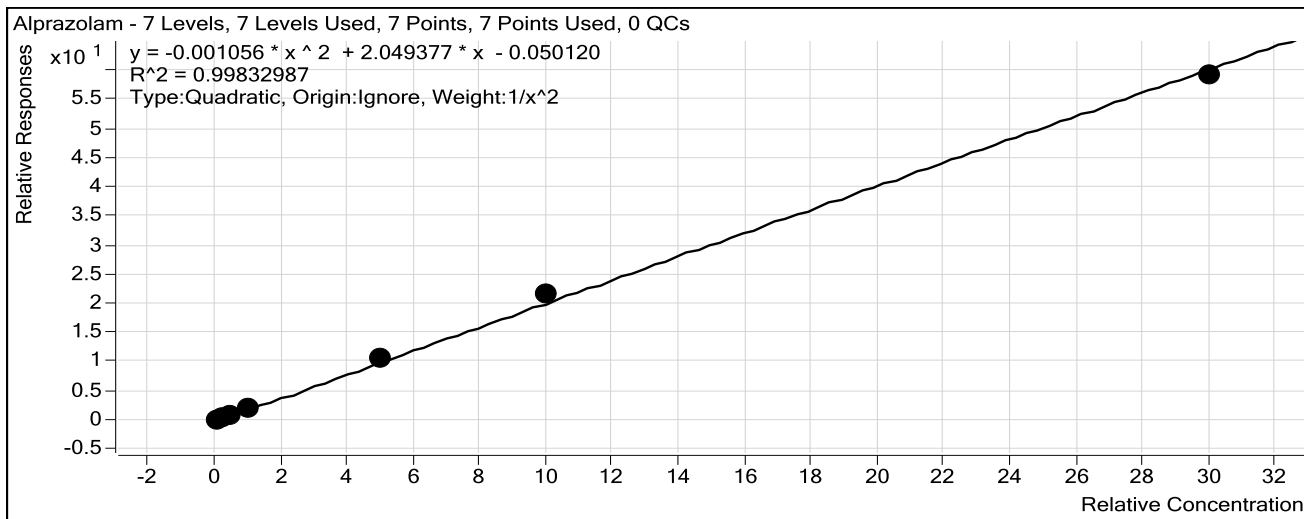
ISP Forensics Calibration Curve Report

CS

Batch Data Path
Last Calib Update

I:\Pocatello\Abby\2016\Combined\QuantResults\818bzpoc.batch.bin
8/22/2016 2:28 PM **Analyst Name** ISP TOX

Target Compound *Alprazolam*
Internal Standard *alphahydroxyalprazolam-D5 ISTD*

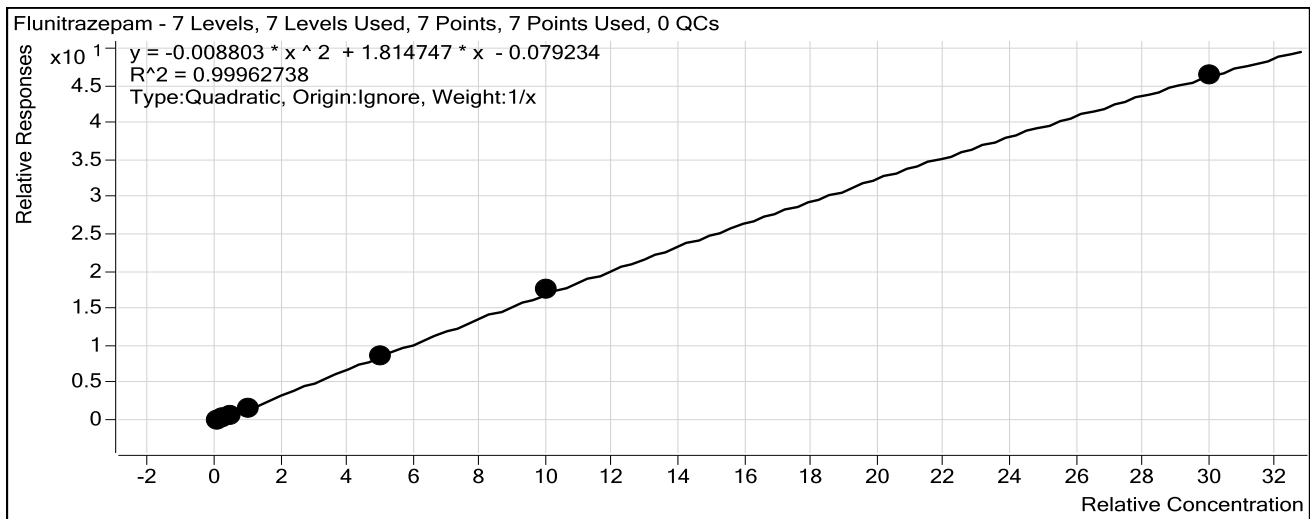


Sample	Level	Enabled	Exp Conc	Final Conc	Accuracy
10 ng/mL	2	<input checked="" type="checkbox"/>	10	10.2	101.8
25 ng/mL	3	<input checked="" type="checkbox"/>	25	24.3	97.4
50 ng/mL	4	<input checked="" type="checkbox"/>	50	48.5	97.0
100 ng/mL	5	<input checked="" type="checkbox"/>	100	97.4	97.4
500 ng/mL	6	<input checked="" type="checkbox"/>	500	513.3	102.7
1000 ng/mL	7	<input checked="" type="checkbox"/>	1000	1061.3	106.1
3000 ng/mL	8	<input checked="" type="checkbox"/>	3000	2928.5	97.6

ISP Forensics Calibration Curve Report

Batch Data Path I:\Pocatello\Abby\2016\Combined\QuantResults\818bzpoc.batch.bin
Last Calib Update 8/22/2016 2:28 PM **Analyst Name** ISP TOX

Target Compound Flunitrazepam
Internal Standard Clonazepam-D4 ISTD



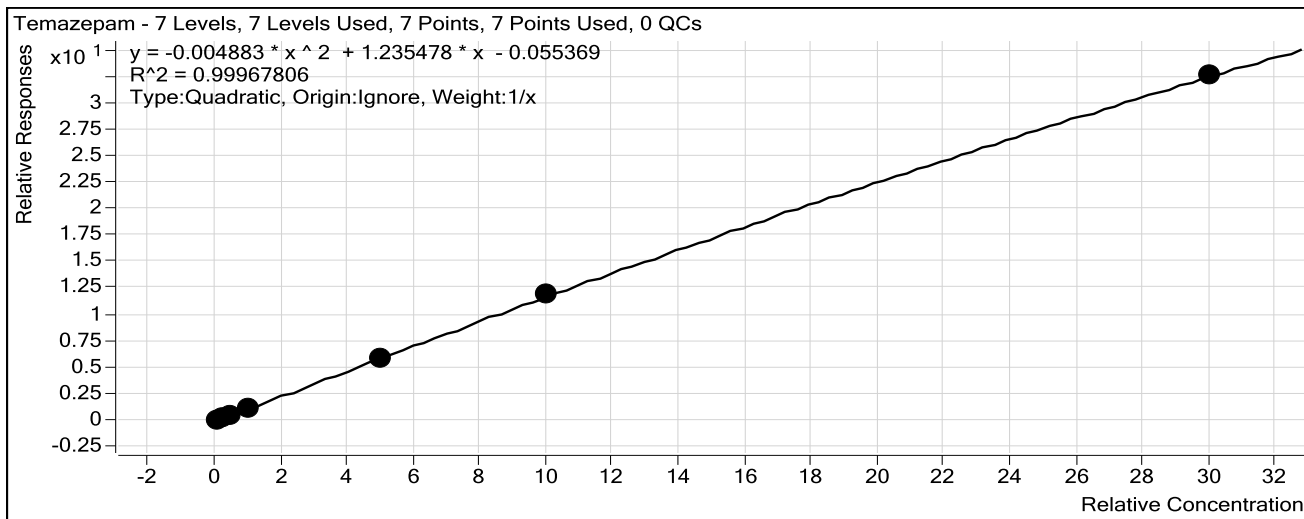
Sample	Level	Enabled	Exp Conc	Final Conc	Accuracy
10 ng/mL	2	<input checked="" type="checkbox"/>	10	11.7	116.6
25 ng/mL	3	<input checked="" type="checkbox"/>	25	24.3	97.0
50 ng/mL	4	<input checked="" type="checkbox"/>	50	45.1	90.2
100 ng/mL	5	<input checked="" type="checkbox"/>	100	95.3	95.3
500 ng/mL	6	<input checked="" type="checkbox"/>	500	496.4	99.3
1000 ng/mL	7	<input checked="" type="checkbox"/>	1000	1018.6	101.9
3000 ng/mL	8	<input checked="" type="checkbox"/>	3000	2993.2	99.8

ISP Forensics Calibration Curve Report

Batch Data Path
Last Calib Update

I:\Pocatello\Abby\2016\Combined\QuantResults\818bzpoc.batch.bin
8/22/2016 2:28 PM **Analyst Name** ISP TOX

Target Compound *Temazepam*
Internal Standard *Temazepam-D5 ISTD*



Sample	Level	Enabled	Exp Conc	Final Conc	Accuracy
10 ng/mL	2	<input checked="" type="checkbox"/>	10	11.5	114.5
25 ng/mL	3	<input checked="" type="checkbox"/>	25	24.5	98.1
50 ng/mL	4	<input checked="" type="checkbox"/>	50	45.2	90.4
100 ng/mL	5	<input checked="" type="checkbox"/>	100	96.4	96.4
500 ng/mL	6	<input checked="" type="checkbox"/>	500	494.5	98.9
1000 ng/mL	7	<input checked="" type="checkbox"/>	1000	1018.9	101.9
3000 ng/mL	8	<input checked="" type="checkbox"/>	3000	2993.8	99.8

ISP Forensics Calibration Curve Report

Batch Data Path
Last Calib Update

I:\Pocatello\Abby\2016\Combined\QuantResults\818bzpoc.batch.bin

8/22/2016 2:28 PM

Analyst Name

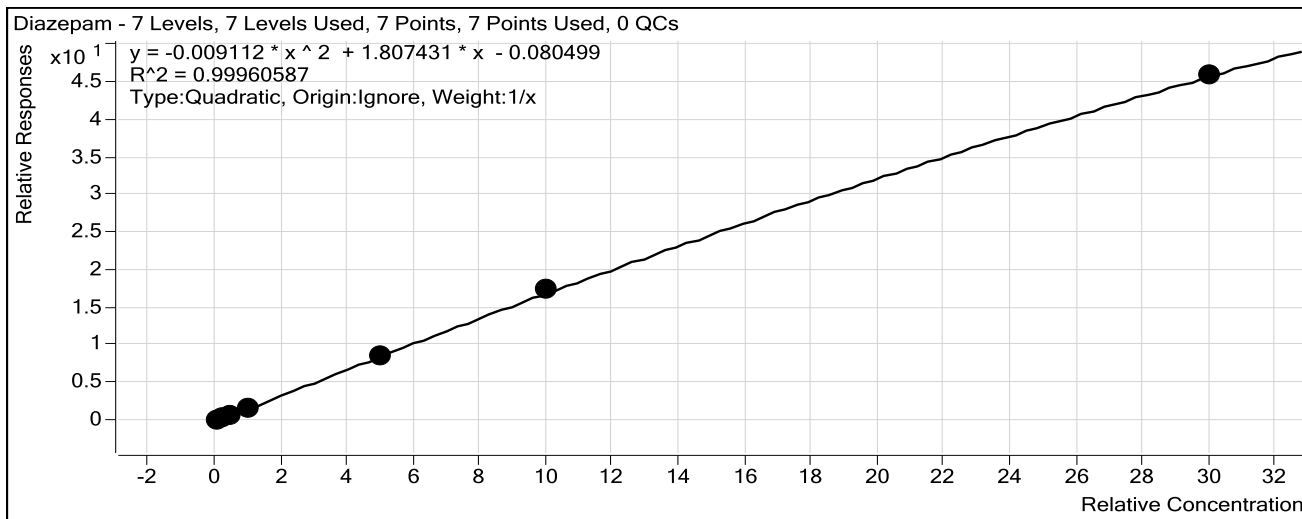
ISP TOX

Target Compound

Diazepam

Internal Standard

Diazepam-D5 ISTD



Sample	Level	Enabled	Exp Conc	Final Conc	Accuracy
10 ng/mL	2	<input checked="" type="checkbox"/>	10	11.5	115.0
25 ng/mL	3	<input checked="" type="checkbox"/>	25	24.2	96.6
50 ng/mL	4	<input checked="" type="checkbox"/>	50	46.4	92.9
100 ng/mL	5	<input checked="" type="checkbox"/>	100	95.1	95.1
500 ng/mL	6	<input checked="" type="checkbox"/>	500	491.2	98.2
1000 ng/mL	7	<input checked="" type="checkbox"/>	1000	1024.2	102.4
3000 ng/mL	8	<input checked="" type="checkbox"/>	3000	2991.9	99.7

ISP FORENSICS

Pocatello

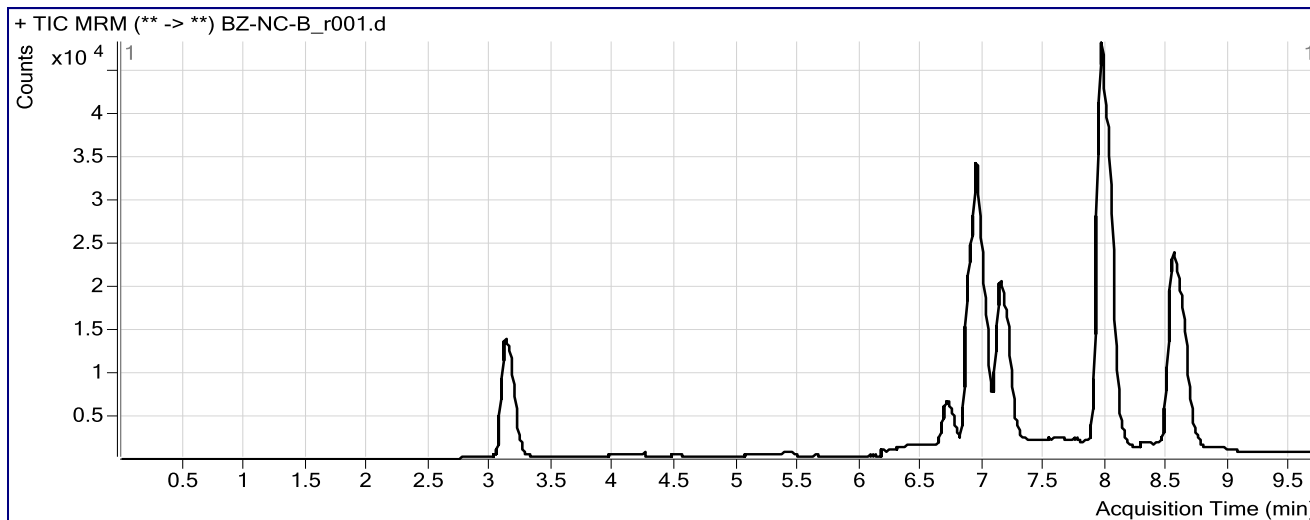
Benzodiazepine Analysis Report

Batch Data Path I:\Pocatello\Abby\2016\Combined\QuantResults\818bzpoc.batch.bin
Analysis Time 8/22/2016 2:29 PM **Analyst Name** ISPUser
Report Time 8/22/2016 2:50 PM **Reporter Name** ISPUser
Last Calib Update 8/22/2016 2:28 PM **Batch State** Processed

Analysis Info

Acq Time 2016-08-18 21:40 **Data File** BZ-NC-B_r001.d
Sample Type Sample **Sample Name** Negative Blood Control
Dilution 1 **Acq Method** Benzos_Z_Drugs_ACN_FA_ISP_2016.m
Position P1-E9 **Sample Info** UTAK Negative Whole Blood LOT B1013
Inj Vol -1 **Comment** AM 6.1.1 Benzo and Z by LCQQQ

Sample Chromatogram



ISP FORENSICS

Pocatello

Benzodiazepine Analysis Report

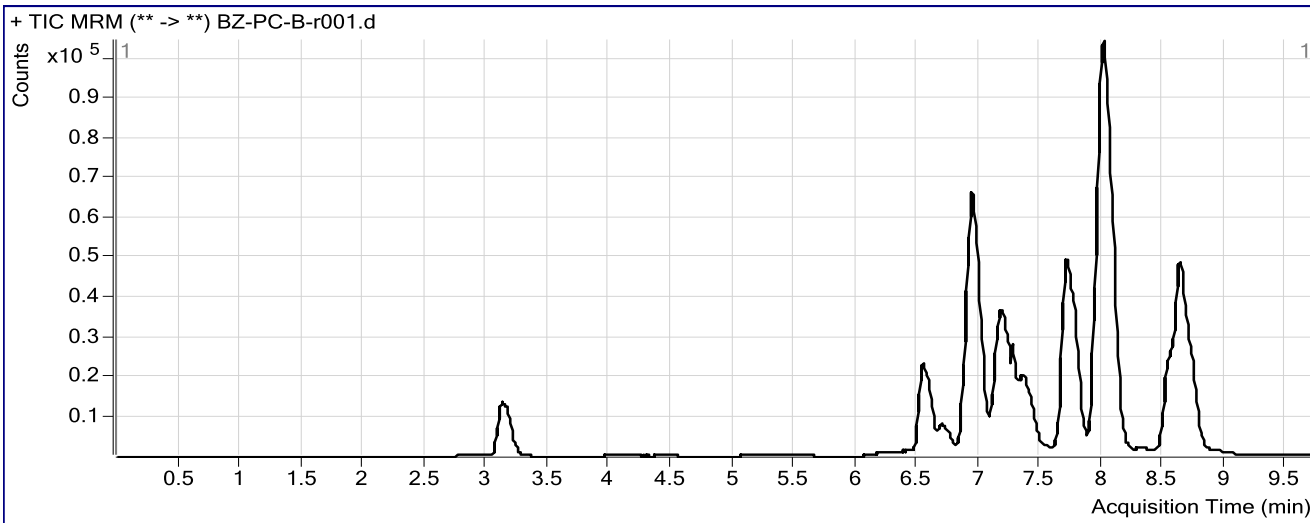
Batch Data Path I:\Pocatello\Abby\2016\Combined\QuantResults\818bzpoc.batch.bin
Analysis Time 8/22/2016 2:29 PM **Analyst Name** ISPUser
Report Time 8/22/2016 2:50 PM **Reporter Name** ISPUser
Last Calib Update 8/22/2016 2:28 PM **Batch State** Processed

CS

Analysis Info

Acq Time 2016-08-18 21:56 **Data File** BZ-PC-B-r001.d
Sample Type Sample **Sample Name** Positive Blood Control
Dilution 1 **Acq Method** Benzos_Z_Drugs_ACN_FA_ISP_2016.m
Position P1-E8 **Sample Info** Benzodiazepines Mix Cerilliant lot FE012413-02 in UTAK LOT B1013
Inj Vol -1 **Comment** AM 6.1.1 Benzo and Z by LCQQQ

Sample Chromatogram



Results

Compound	ISTD Compound	RT	Response	ISTD Resp	Resp Ratio	Final Conc
Nitrazepam	Clonazepam-D4 ISTD	6.540	95022	107567	0.8834	55.8803
Oxazepam	Nordiazepam-D5 ISTD	6.925	139456	71890	1.9398	95.4253
Clonazepam	Clonazepam-D4 ISTD	7.176	95045	107567	0.8836	108.8256
Lorazepam	Nordiazepam-D5 ISTD	7.259	20937	71890	0.2912	110.3089
Alprazolam	alphanhydroxyalprazolam-D5 ISTD	7.371	81596	27543	2.9625	147.1118
Flunitrazepam	Clonazepam-D4 ISTD	7.706	262035	107567	2.4360	139.5457
Temazepam	Temazepam-D5 ISTD	8.012	425259	328469	1.2947	109.7489
Diazepam	Diazepam-D5 ISTD	8.641	213653	123445	1.7308	100.7230